



Facilis Hub Client Console Guide

Facilis Client Console Hub is a shared storage solution for the DIC community on Mac. The software provides a storage system, allowing DIC students to store, access, and share their work quickly.

Here's a guide on how to use it:

1. Launch the Facilis Client Console Hub application from the dock.



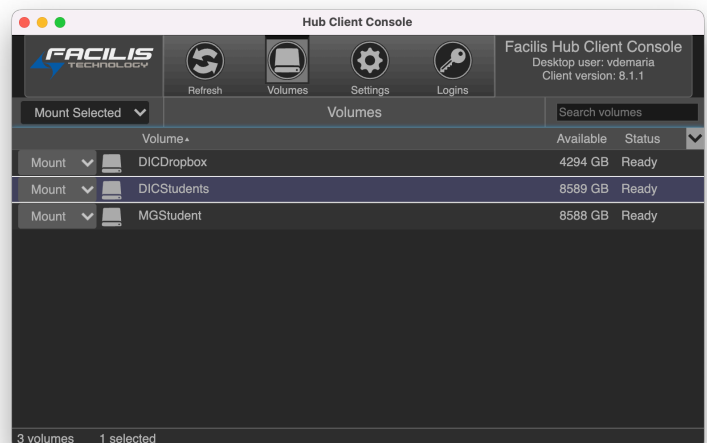
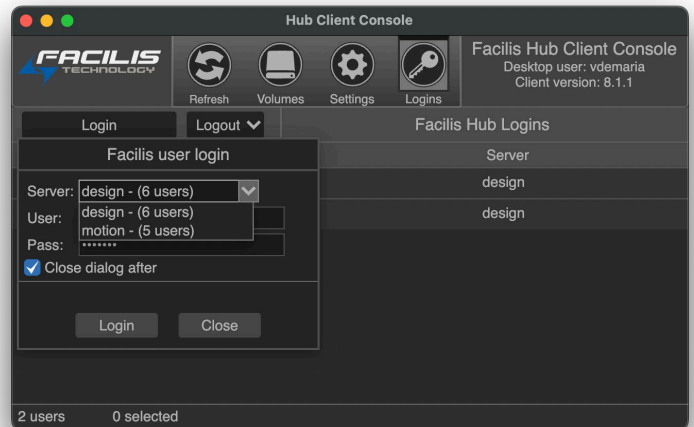
2. Click on the "Login" icon next to the "Settings" button on the top menu and select the "Login" button.

3. Select your server "Design" or "Motion"
Enter the following username and password:

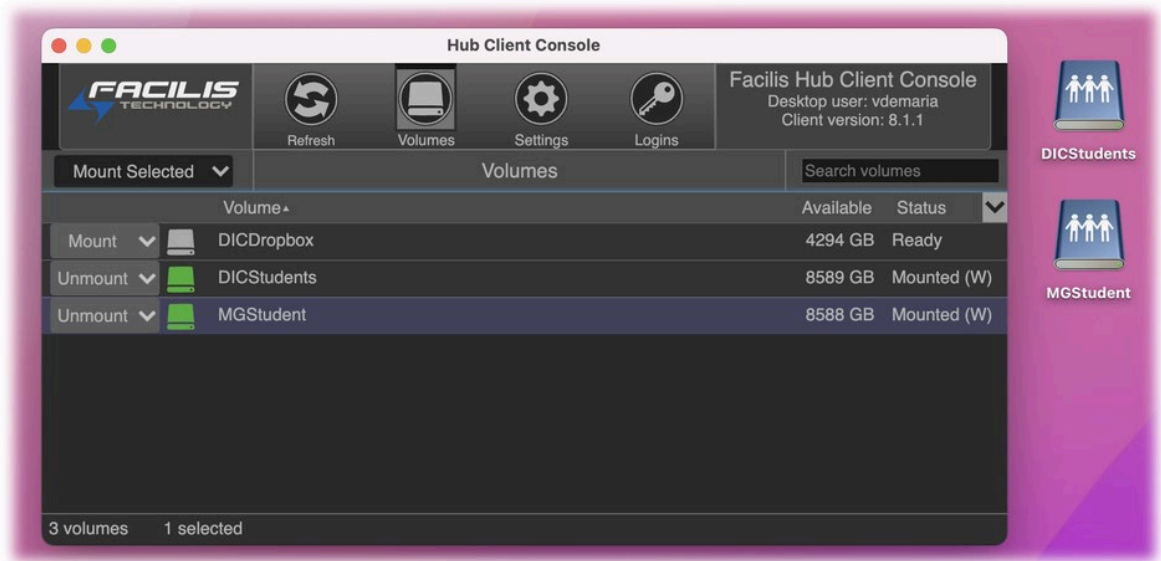
For Design Students
Username: *dicstudent*
Password: *student*

For Motion Graphics Students
Username: *mgstudent*
Password: *student*

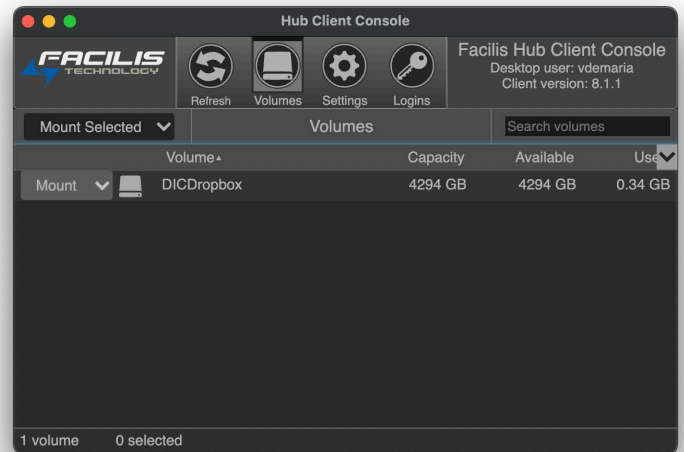
4. To mount the drive:
Click on the "Volumes" tab in the navigation menu on the left. Select the "DICStudents" for Design or "MGStudents" for Motion Graphics volume from the list.



5. Click the "Mount" button. Once the volume is mounted, you can create folders and store your work for class. This storage is intended for artwork only, not personal documents.



6. A default drive called "DICDropbox" is meant for quick sharing of homework or to use as an express lane to copy and share work. To access the "DICDropbox" drive, click on the folder from the file explorer on your Mac.



Note: This is not a permanent storage solution, and the drives will be cleaned out after graduation each year. Please save your essential files to an external device or cloud storage service.